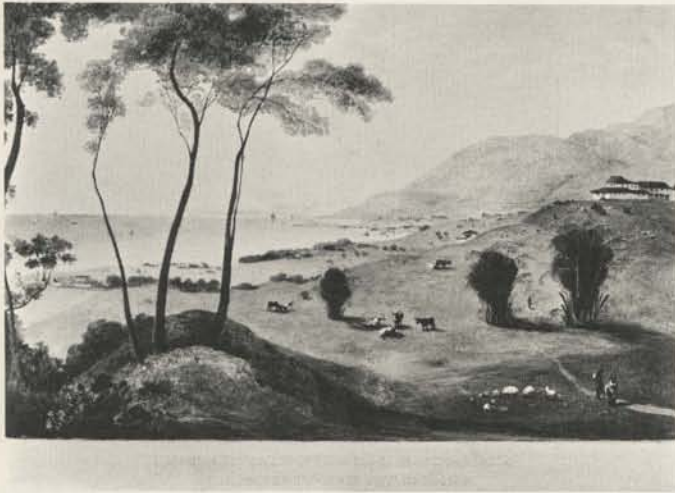




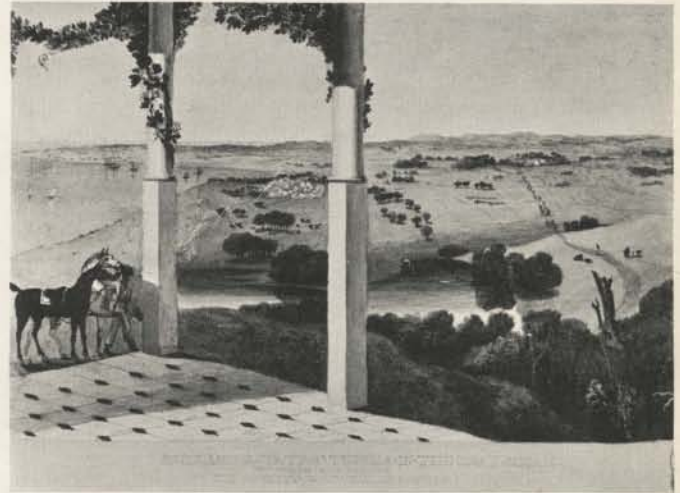
*Holland Estate, St. Thomas in the East*



*Millyard Holland Estate, St. Thomas in the East*



*Lyssons Estate, St. Thomas in the East*



*Holland Estate, St. Thomas in the East  
View from the Change of Air House*



*Llanrummy Estate, St. Mary's*



*Houghton Court, Hanover*

22. *A Set of Six important Watercolour Drawings of the Sugar Industry in Jamaica. Estates belonging to G. Watson Taylor, M.P.*

**James Hakewill** (1778-1843)

Executed about 1820. Bound in a folio volume. Green morocco extra

Each approx. 11 × 16½ inches



A Series of Watercolours showing Views in the Great Lakes and Canada, by **J. H. Caddy**

John Herbert Caddy was commissioned in the Royal Artillery from the Royal Military Academy, Woolwich, aged 24, in 1825. He served in the West Indies from November 1828 until February, 1841, during which period his *Scenery of the Windward and Leeward Islands* was published (1837). He was in Canada from July 1842 until May 1844

23. *Canadian Fall from near the Staircase, Niagara Falls*  
 $9\frac{1}{2} \times 13$  inches £35
24. *Canadian Fall, Niagara, from Table Rock*  
 $9\frac{3}{8} \times 12\frac{3}{4}$  inches £35
25. *Niagara Falls looking down the River*  
 $9\frac{1}{4} \times 12\frac{1}{2}$  inches £35
26. *From the Top of American Fall, Niagara*  
 $9\frac{5}{8} \times 12\frac{7}{8}$  inches £35
27. *Horse Shoe Falls from Road to Ferry, Niagara*  
 $9\frac{1}{4} \times 12\frac{5}{8}$  inches £35
28. *The Whirlpool, Niagara River*  
 $8\frac{1}{4} \times 12\frac{3}{4}$  inches £35
29. *Niagara Falls from near Suspension Bridge*  
 $8\frac{7}{8} \times 12\frac{1}{2}$  inches £35
30. *From Goat Island, Niagara Falls*  
 $9\frac{1}{2} \times 12\frac{7}{8}$  inches £35
31. *On Lake Mutadenenadad, North Shore, Lake Huron, C.W.*  
 $9\frac{1}{4} \times 15\frac{7}{8}$  inches £35
32. *Cape Thunder Entrance to Thunder Bay, Lake Superior*  
 $8 \times 13\frac{3}{8}$  inches £35
33. *Near Flamboro', C.W.*  
 $12\frac{1}{8} \times 8\frac{3}{4}$  inches £35
34. *Near the Long Range, Grimbsy*  
 $8\frac{1}{2} \times 12\frac{1}{4}$  inches £35
35. *View in the Thousand Islands*  
 $8\frac{7}{8} \times 12\frac{1}{2}$  inches £35
36. *On Lake St. Peter*  
 $8\frac{3}{8} \times 12\frac{3}{8}$  inches £35
37. *Killarny, or Lake Shebananing, North Shore, Lake Huron*  
 $7\frac{5}{8} \times 13\frac{1}{4}$  inches £35
38. *The Splits Rock, St. John's River, New Brunswick*  
 $11\frac{3}{8} \times 17\frac{1}{2}$  inches £40
39. *Bourne Lake, North Shore, Lake Huron*  
 $10\frac{1}{2} \times 14$  inches £35
40. *Shebananing or Killarny North Shore, Lake Huron, C.W.*  
 $10\frac{1}{8} \times 14$  inches £35
41. *On Lake Mutadenenadad, North Shore, Lake Huron, C.W.*  
 $10\frac{3}{8} \times 14\frac{1}{4}$  inches £35
42. *On Lake Mutadenenadad, North Shore, Lake Huron, C.W.*  
 $15\frac{1}{2} \times 11\frac{3}{8}$  inches £35
43. *Niagara from Drummondville Road*  
 $9\frac{3}{8} \times 13\frac{7}{8}$  inches £35
44. *From the Icebridge, Niagara Falls*  
 $9\frac{1}{2} \times 13\frac{7}{8}$  inches £35
45. *On Little Lake George on the north channel to the Sault*  
 $6\frac{7}{8} \times 13$  inches £35
46. *On Bourne Lake, North Shore, Lake Huron, C.W.*  
 $5\frac{3}{8} \times 12\frac{3}{8}$  inches £35



40. *Shebananing or Killarny North Shore, Lake Huron, C.W.*



37. *Killarny, or Lake Shebananing, North Shore, Lake Huron*



32. *Cape Thunder Entrance to Thunder Bay, Lake Superior*



38. *The Splits Rock, St. John's River, New Brunswick*